

Pyrusium Installation Instructions

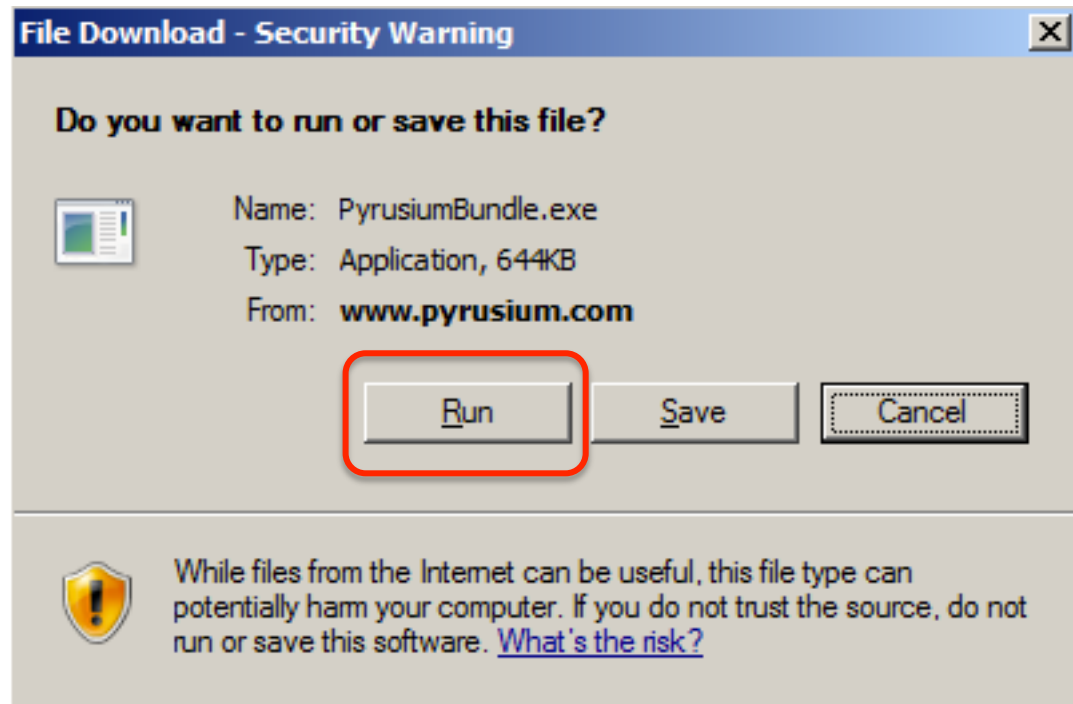
Please note, if the installer detects missing Windows files (Microsoft .NET or VC 2012 x86 redistributable package), the installer will automatically guide you through installation of these files. For the core Pyrusium installation, please follow the instructions below. This needs to be repeated on every workstation requiring access to a PyrusApp.

Prerequisites:

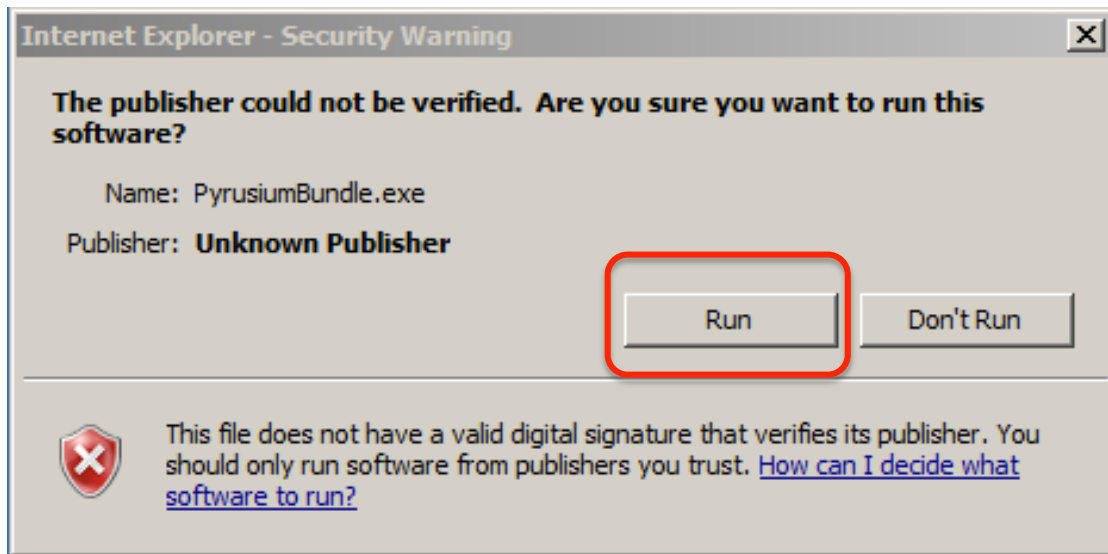
A license for the practice has been setup by Black Pear.

Pyrusium Installation:

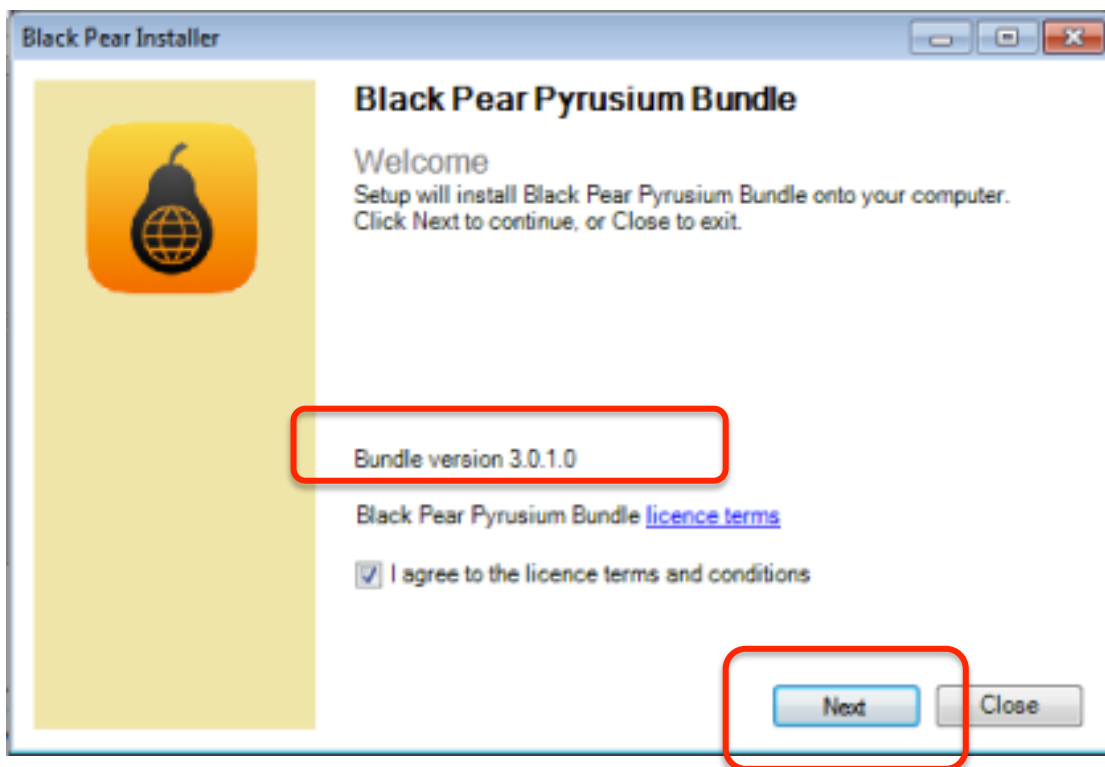
1. Browse to: <http://www.pyrusium.com/downloads/PyrusiumBundle.exe>
2. Choose to Run the PyrusiumBundle.exe.



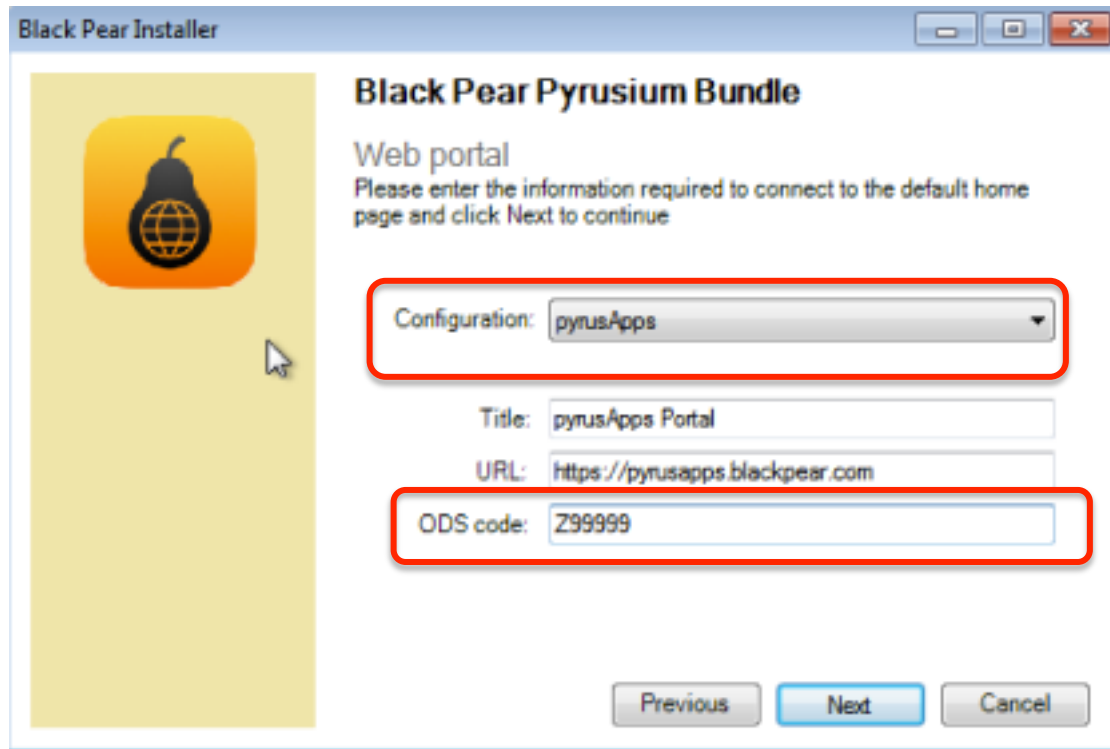
- Depending on your configuration, you may see the message below - choose Run.



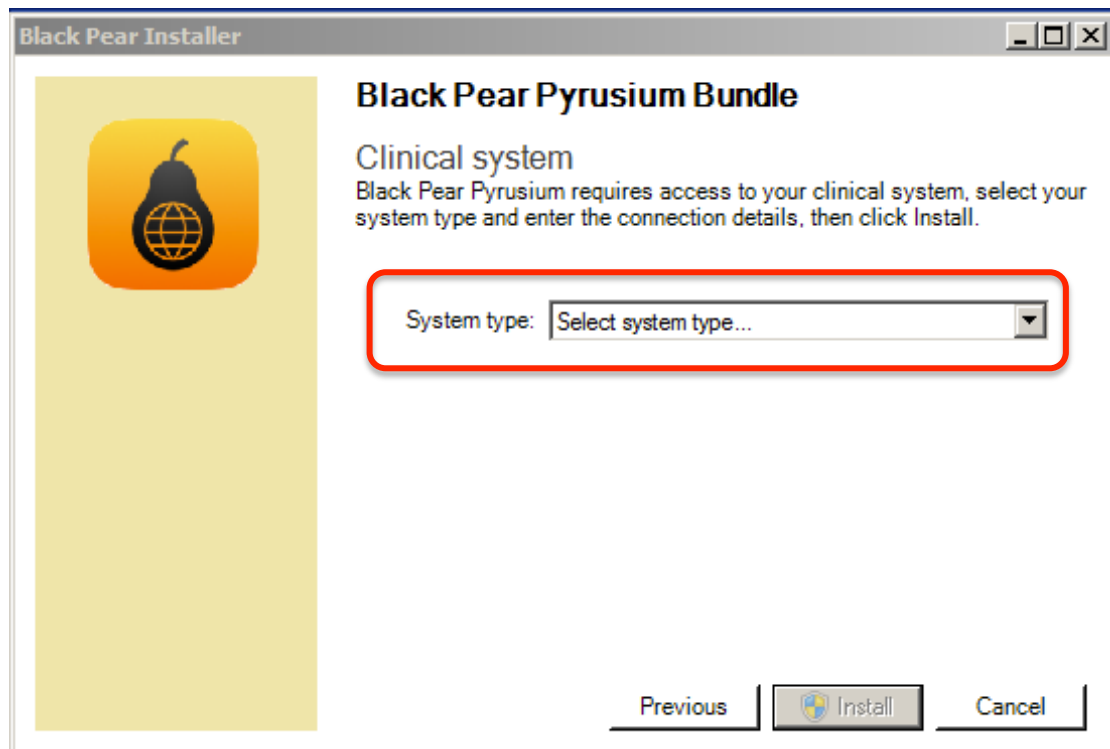
- Agree to the licence terms and conditions by ticking the checkbox.
- Click the Next button.



6. In the Configuration drop down box, select portal type "pyrusApps"
7. In ODS code, enter your practice ODS (NACS) code e.g. Z99999 and click Next.



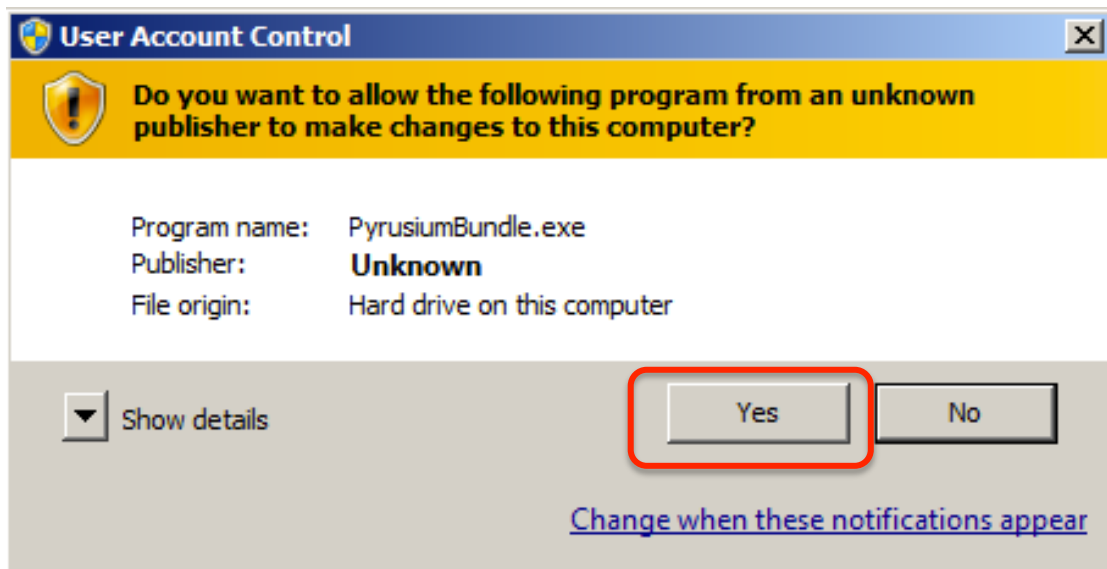
8. Within the drop down box, select the clinical system used within your practice e.g. EMIS Web, INPS Vision 360, TPP SystemOne:



- For EMIS practices, enter the practice CDB number within the CDB Number box used during EMIS login.
- Click the Install button.



- Depending on how your system is configured, you may get the following warning message. Click Yes to proceed.



12. Once the installation the following box will appear. Click Close.

